



---

# EN54-24 CERTIFIED LOUDSPEAKERS



RGS8TAB

ROUND METAL CEILING LOUDSPEAKERS



**New**  
**RGS8TABX/EN**  
**RGS8TAB/EN**  
**RGS8TAB/ENC**

The RGS8TAB series is made of metal, highly efficiency, and contains two 3.5" speaker drivers with 2x6W transformer. The mounting system has been improved once more: 3 spring clamps with cropped leg spring, increased clamp force and shortened tension distance. This allows a quick and easy mounting. The high quality broadband chassis and transformer make part of the chassis. The grill can be release from the front side.

RCS/RLS

METAL DUAL-CONE AND COAXIAL CEILING LOUDSPEAKERS



**RCS4FT/EN - RCS4FT/ENC**  
**RCS5FT/EN - RCS5FT/ENC**  
**RCS6FT/EN - RCS6FT/ENC**  
**RCS8FT/EN - RCS8FT/ENC**



**RLS5ST/EN**  
**RLS5FTP/EN**  
**RLS5FTS/EN**



**RCS5FTCX/EN - RCS5FTCX/ENC**  
**RCS6FTCX/EN - RCS6FTCX/ENC**  
**RCS8FTCX/EN - RCS8FTCX/ENC**

The RCS is made from a steel epoxy coated chassis incorporating a twin cone driver, and RLS is also made from a metal design with either a fire dome module (RLS5FTS/EN) or without (RLS5ST/EN). The RCS/RLS has a wider frequency range than the standard single cone and this makes the RCS more suitable for use in applications where background music is a primary requirement.

The RCS employs a two-way speaker system comprising a bass mid-range driver and separate tweeter. The bass response has been extended to incorporate in both music and vocals which tailors to given an exceptionally smooth performance whilst maintaining an high sensitivity.

APC/SENTRY/PMC

CLOSED-BACK CABINET LOUDSPEAKERS



**APC4T/EN - APC4T/ENC**  
**APC6BT/EN - APC6BT/ENC**

The APC is manufactured from ABS plastic with an added polymer to avoid discoloration in bright sun light, making them UV protected, smoke and halogen free. The APC loudspeaker is all fitted with epoxy coated steel grilles.



**SENTRY6ST/EN - SENTRY6ST/ENC**  
**SENTRY6RT/EN - SENTRY6RT/ENC**

The SENTRY is constructed from epoxy coated high grade steel and can be installed on solid ceilings or walls. Supplied with dual gland entries, which give the installer the option of loop in loop out termination thus avoiding the need for a separate junction box, these cabinets are both robust and aesthetically pleasing.



**PMC4T/EN - PMC4T/ENC**

The PMC is a marine, water resistant molded cabinet loudspeaker with its treated cone, offering a solution for areas where speech is required in damp, wet, high humidity and salt laden environments such as boat decks, and other applications like bathrooms and canteens.

**CELL/CAD**

**METAL/PLASTIC SOUND PROJECTORS**



**CELL10T/EN - CELL10T/ENC**  
**CELL20T/EN - CELL20T/ENC**  
**CELL10BT/EN - CELL10BT/ENC**

The CELL is an elegant sound projectors, manufactured from epoxy coated high grade aluminum extrusion with dual cone drive units which gives both clear speech and excellent background music reproduction.

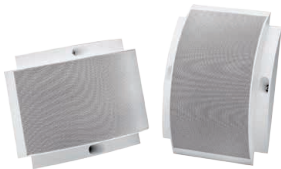


**CAD10T/EN - CAD10T/ENC**  
**CAD20T/EN - CAD20T/ENC**

The CAD weatherproof sound projector offers a combination of style and performance. Manufactured from an ABS-molded component with built-in UVL (ultra violet light) protection with a high quality and Plastiflex cone.

**PBC/PWC/MWC/WWC6TAB**

**OPEN-BACK WALL-MOUNT LOUDSPEAKERS**



**PBC6T/EN - PBC6T/ENC**  
**PBC10TCX/EN - PBC10TCX/ENC**

The PBC/PWC/MWC are manufactured from ABS plastic with an added polymer to avoid discoloration in bright sun light ,making them UV protected, smoke free and no halogen as well. They are all fitted with epoxy coated steel grilles. These exceptional loudspeakers are both stylish and elegant and offer a cost-effective alternative to the conventional rectangular styled cabinet loudspeaker.



**PWC6T/EN - PWC6T/ENC**



**MWC6T/EN - MWC6T/ENC**

The MWC wall-mounted speaker is made out of powder-coated solid steel housing with flat grill and developed for wall and hard ceiling applications like sporting venues. A round surface mount speaker with strong acoustic behavior and high efficiency. Excellent for music and speech. Equipped with a full range speaker this product delivers excellent sound in a unobtrusive way.



**WWC6TABX/EN**  
**WWC6TAB/EN**  
**WWC6TAB/ENC**



The WWC6TAB series is a combination of modern design, high quality sound performance, and an ideal voice alarm speaker for fire alarm and detection system. It contains two 3.5" speaker drivers with 2 x 6W transformer.

**APH/MSH/MHS/MPS**

**PLASTIC/METAL WATERPROOF HORN LOUDSPEAKERS**



**APH10T/ENC**  
**APH20T/ENC**  
**APH30T/ENC**



**MSH30T/EN**  
**MSH30T/ENC**



**MHS20T/ENC**

The APH/MSH/MHS/MPS horn speakers are lightweight, weatherproof, non-corrosive, resistant to salt laden air and have been designed for high quality sound reinforcement. Made in a ABS molded compound to meet UL94V0 fire retardant standard, smoke free, no halogen with UVL (ultra violet light) protection and supplied with a high grade stainless steel epoxy coated straight bracket. All these features make them more suitable for both indoors and outdoors use.

**GB**

**SPHERICAL LOUDSPEAKERS**

The GB is a true omni-directional spherical loudspeaker, providing coverage angles of 360 degrees horizontal and 140 ~ 160 degrees vertical, giving an even dispersion over the audio spectrum. This excellent dispersion together with smooth frequency response and carefully controlled performance. The GB series offers solutions to many problems that arise in difficult acoustic applications. Ideally suited for large open spaces such as warehouses, retail complexes, concourses, factories etc.



**GB15T/EN - GB15T/ENC**  
**GB20T/EN - GB20T/ENC**



**MCS**

**METAL COLUMN LOUDSPEAKERS**



**MCS20T/EN - MCS20T/ENC**  
**MCS40T/EN - MCS40T/ENC**  
**MCS80T/EN - MCS80T/ENC**

The MCS offers a combination of elegant styling, robust construction and high performance. The enclosure is tuned to give a wide frequency range not normally associated with column loudspeakers and produces high quality music and speech reproduction. Ideally suited for use in.



**ATEiS Europe B.V.**  
**Europe & Africa**  
Celsiusstraat 1 - 2652 XN Lansingerland  
(Rotterdam Region), Netherlands  
Tel: +31 (0)10 2088690  
info@ateis-europe.com



**Penton Audio USA**  
**USA, Canada & Latin America**  
21 Sabin Street Pawtucket, RI 02860, USA  
Tel: +1 401-727-1600  
Fax: +1 401-727-0003  
info@penton-usa.com



**ATEiS France**  
8, rue de l'Europe - ZA de Font Ratel,  
38640 Claix, France  
Tel: +33 (0)4 76992630  
contact@ateis.com



**ATEiS China**  
Room 610, No.255 Wubao Road, Minxing  
district, Shanghai, China  
Tel: +021-54495191/92  
Fax: +021-54495193  
sales@ateis.com.cn



**Penton UK Ltd.**  
**UK & Ireland**  
Unit 2, Teville Industrials, Dominion Way, Worthing  
West Sussex, BN14 8NW, United Kingdom  
Tel: +44 (0)1903 215315  
Fax: +44 (0)1903 215415  
sales@pentonuk.co.uk



**Xavtel Communications RUS Ltd.**  
Russian Federation, 115280, Moscow  
Leninskaya Sloboda str., 26 bld. 28,  
Business Center "Slobodskoy", oce#122  
Tel/Fax: +7 495 803 3655  
info@xavtel.ru.com



**ATEiS Far East Corp.**  
**Far-East Asia**  
2F No.60, Xinghua 2nd Rd. Tanzi,  
Taichung, Taiwan  
Tel: +886 4 25333840  
Fax: +886 4 25333830  
sales@ateis-fareast.com



**ATEiS Suisse SA**  
Avenue des Baumettes 9, 1020 Renens VD,  
Switzerland  
Tel: +41 (0)218812510  
Fax: +41 (0)218812509  
info@ateis.ch



**ATEiS Middle East FZCO.**  
**Middle East & India**  
LIU No. 11, Dubai Silicon Oasis,  
293640 Dubai, United Arab Emirates  
Tel: +971 (4) 3262730  
Fax: +971 (4) 3262731  
info@ateis.ae



**ATEiS SE PTE. LTD.**  
**South-East Asia**  
Blk 5002 Ang Mo Kio Ave 5, #03-01B TECHplace  
II, Singapore 569871  
Tel: +65 6481 1968  
Fax: +65 6481 1960  
info@ateis-se.com.sg

